

REVISION AND PRINT RECORD			
REV. BY	DESCRIPTION	DATE	FOR
LC	INITIAL LAYOUT	6/10/26	APP

GENERAL SPECIFICATIONS

DESCRIPTION / MATERIAL / FINISH

MODEL TYPE: LVL SQ200

FLOORS NUMBER OF STOPS:
 TWO (2) THREE (3) FOUR (4) FIVE (5)

COLOR:
 BLACK (STANDARD) LIGHT GRAY
 WHITE DARK GRAY
 TAUPE SILVER

TRAVEL HEIGHT & FLOOR MOUNTS:
 T1: 120.000' INCHES MILLIMETERS
 THROUGH FLOOR BALCONY
 T2: 120.000' INCHES MILLIMETERS
 THROUGH FLOOR BALCONY
 T3: 120.000' INCHES MILLIMETERS
 THROUGH FLOOR BALCONY
 D.C.: 108.00' INCHES MILLIMETERS
 (OVERHEAD CLEARANCE)

EXTENSION TOP FLOOR EXTENSION OPTIONS:
 YES NO
 SPLIT PLATE EXTENSION YES NO
 HEAD UNIT EXTENSION YES NO

OTHER OPTIONS:
 CABIN TELEPHONE
 CABIN KEY LOCK
 EARTHQUAKE BRACKETS
 FOLDABLE CABIN SEAT
 90 DEGREES LEFT DOORS
 90 DEGREES RIGHT DOORS
 STANDARD MOUNT ACOUSTIC PACKAGE
 HOMING FEATURE
 REMOTE CONTROL BOX
 LED LIGH PACKAGE
 REMOTE CONTROL (INCLUDES 1 REMOTE)
 AUTOMATIC DOOR OPENER
 * ALL UPPER FLOORS DOORS MUST BE SAME SIDE

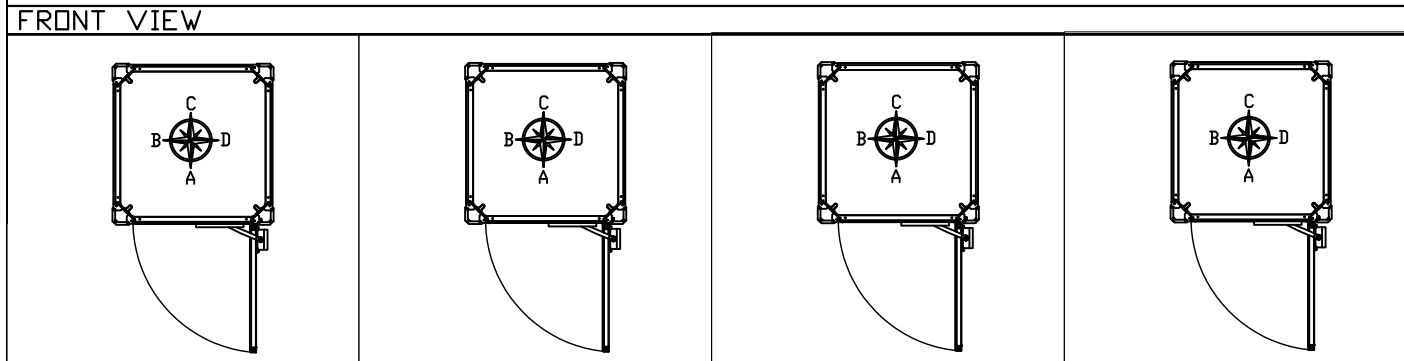
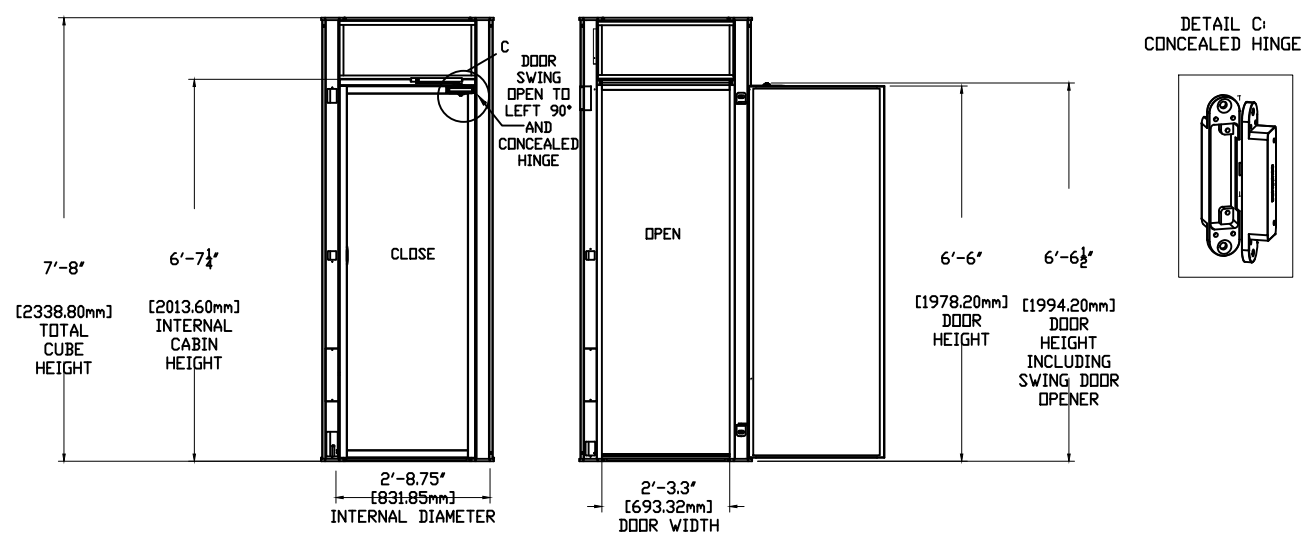
TOLERANCES UNLESS OTHERWISE SPECIFIED
 1" (25.4) 25.4 MM OR LESS ±1/32 (0.031) .793 MM
 OVER 1" (25.4) 25.4 MM LESS THAN 12" (304.8) 304.8 MM ±1/16" (0.625) 1.59 MM
 OVER 12" (304.8) 304.8 MM LESS THAN 60" (1524) 1524 MM ±1/8" (1.25) 3.18 MM
 OVER 60" (1524) 1524 MM TO 120" (3048) 3048 MM ±1/4" (2.5) 6.35 MM

LEVEL UP ELEVATORS & LIFTS LLC LEVEL UP
 4151 WEST 108TH STREET
 HIALEAH, FL 33018
 (305) 884-1091 Fax (305) 884-1092

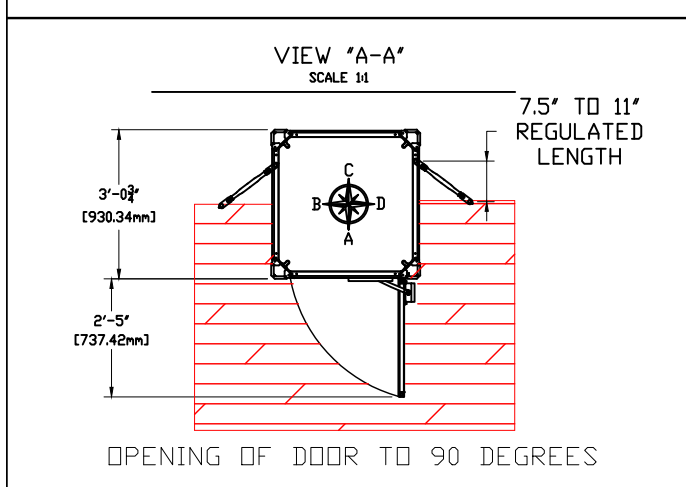
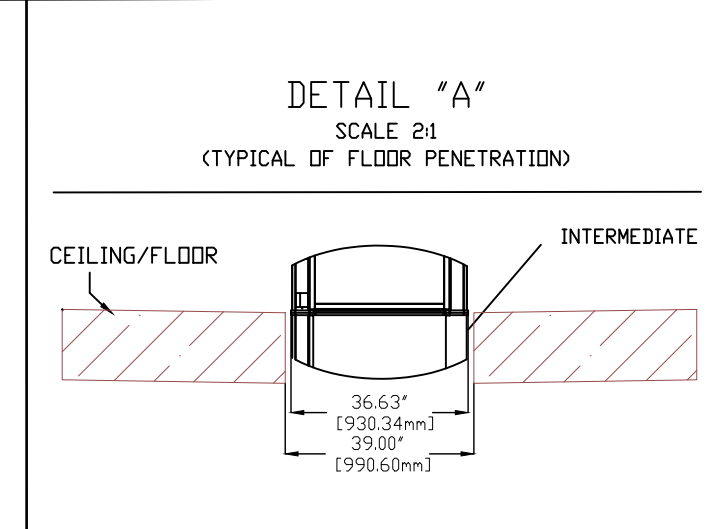
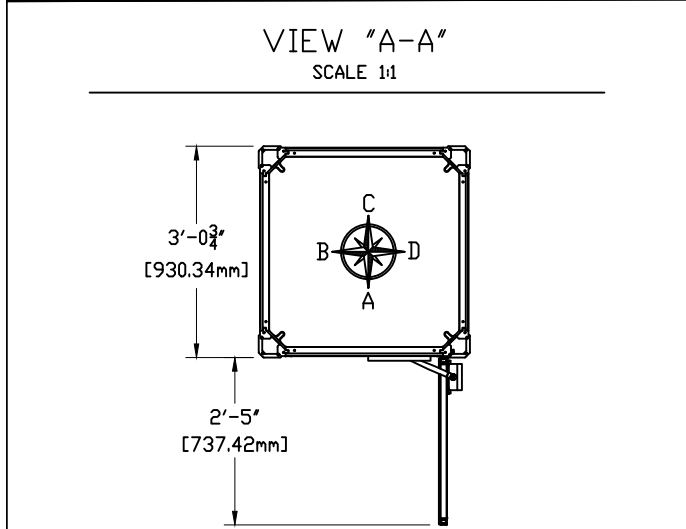
CUSTOMER: -
 JOB NAME: -
 LOCATION: -
 SCALE: NTS

DRAWN BY: LC FINALS: -
 CHECKED BY: JC RELEASED BY: -
 CUSTOMER#: XX P.O. ORDER #: XX

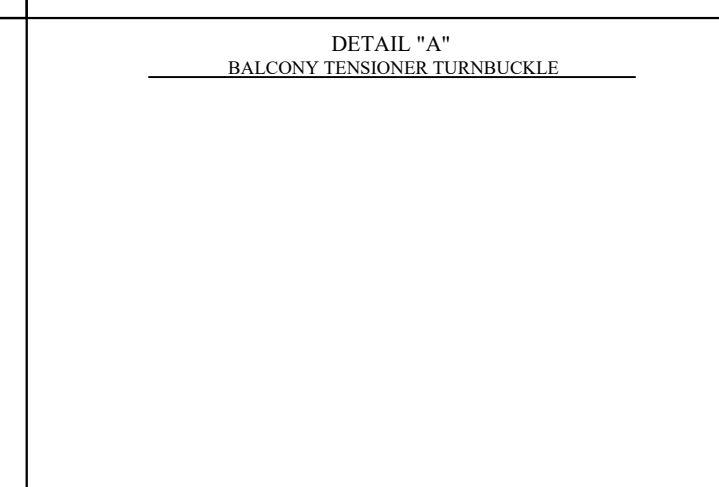
NOTE: SHOP DRAWINGS ARE NOT USED FOR PRODUCTION PURPOSES. LEVEL UP ONLY BUILDS TO THE FINAL RELEASE INFORMATION SUBMITTED ON THE ORDER CONFIRMATION FORMS.



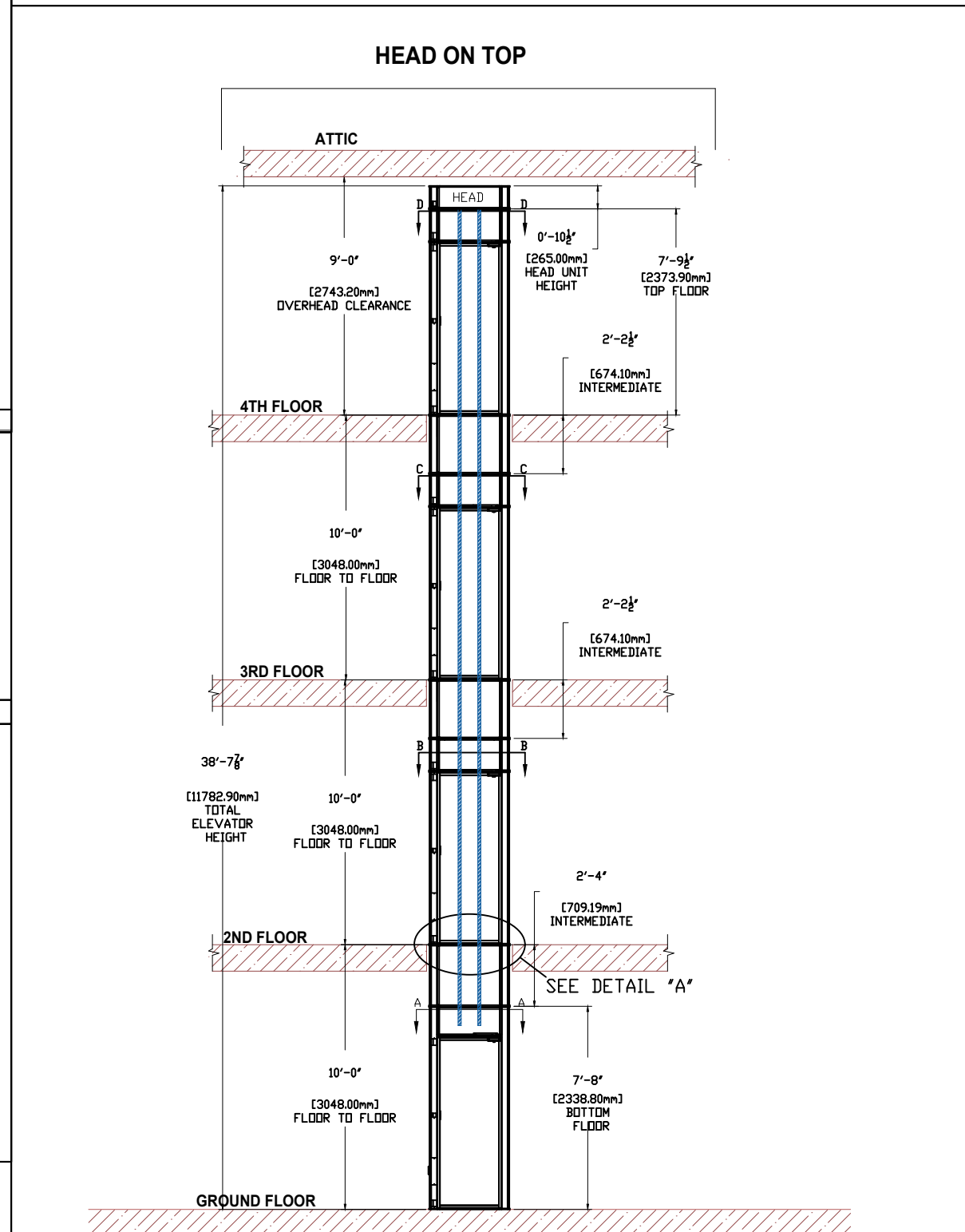
SECTION A-A DOOR SWING SECTION B-B DOOR SWING SECTION C-C DOOR SWING SECTION D-D DOOR SWING



SECTION VIEW (TYPICAL)



DETAIL A - TYPICAL FLOOR INSTALLATION



- NOTE:
- INTERNAL DIMENSION OF CABIN WITHOUT COLUMN IS 29 1/2" (749.3MM) AND THE INTERNAL CABIN HEIGHT IS 6'-5" (1651MM)
 - DOOR WIDTH IS 26 1/2" (673.1MM)
 - THE GIVEN LOAD ON THE GROUND FLOOR IS BASED ON A CAR FULL LOAD OF 450 LBS (204KG), BRAKE ANCHORING, AND MOMENTUM / STRESS UNDER BRAKING. THE LOAD IS 110 PSI. (NOTE: GIVEN LOAD IS WHEN CAR IS AT TOP FLOOR LANDING AND RESTING ON COLUMN/RAILING.THE LOAD IS TRANSMITTED VERTICALLY TO GROUND FLOOR VIA COLUMN)
 - THE EQUIPMENT WEIGHT IS 1079 LBS
 - THE DIMENSION OF EACH COLUMN IS 5.3"x4.77"(134.83MM X 121.19MM)
 - AMERICAN SOCIETY OF MECHANICAL ENGINEERS ASME A 17.1

SHAFT VIEW OF ELEVATOR

REVISION AND PRINT RECORD

REV. BY	DESCRIPTION	DATE	FOR
LC	INITIAL LAYOUT	6/10/26	APP

DETAILS SHEET

General:

- External Dimensions: 36.63" x 36.63"
- Rated Load: 500 lbs. (250 kg)
- Speed: 32 fpm
- No pit required. Bottom level floor must be 100% level as elevator rests on existing floor.
- No hoist way required.
- Area required to install through floors and ceilings: 1521 in².
Opening size: 39"(990.6mm) x 39"(990.6mm).

Safety:

- UPS system for uninterrupted trip in the event of a power failure.
- Manual lowering hand crank device used in the event of a power failure AND backup failure.
- Mechanical emergency safeties within two inches of free fall in cable breakage or catastrophic failure.
- Electromechanical interlocks at each landing
- Alarm system and telephone

Certification:

- This elevator installation as defined in ai7.i will comply with ASME A17.1.

Cabin:

- Entrance width opening: 25" (635mm)
- Internal cabin height: 78" (1981.2mm)
- Internal cabin dimension: 29.5"x 29.5" (749.3mm)
- Automatic LED lighting and cabin fan
- Door Height: 78" (1,981.2 mm).
- Height to top of Door closer: 79.25" (2012.95mm).
- Each landing level specified will include only one door.
- 24 Volt electrical circuits with all controls in cabin.
- Push button call controls with precise leveling at each landing.

Shop drawings are not used for production purposes. LEVEL UP only builds to the final release information submitted on the ORDER CONFIRMATION forms

LVL SQ200 Electrical Specifications:

The following are the electrical requirements for a elevator, model series LVL SQ200:

- 220 VAC suggested nominal load, 220VAC - 240VAC is an acceptable range. (If installation does not have 220 VAC on a regular basis, a voltage regulator or transformer must be installed by the home owner). Voltage fluctuations are not covered by the warranty.
- 1 phase
- 3 Wire (L1, L2, Ground)
- 60/50 Hz
- Homeowner/Electrician needs to provide one 220V, 10A fused disconnect box and one 110V lighting circuit disconnect. Location of disconnect is requirement of local Authority Having Jurisdiction (AHJ).
- Controller needs to be mounted in eye view of the elevator, 36" minimum of working space in front of it
- A phone line with a phone jack is to be provided near the power supply, but isolated
- NEC620 Compliant light Box Specification Input 120V AC-2.1A, Output: 24V-4.5A max
- LEVEL UP DOES NOT PROVIDE POWER CABLE T MAIN DISCONNECT

Suspension:

- White Zinc Coated Steel Rope (7x19)
- IWRC 7X19 Wire Rope
- Nominal Strength: 6,600 lb (2993 kg) Drivetrain
- Winding Drum
- Motor 1.5 HP (1.1 kW - SA)
- Transmission: Gearbox
- Motor Control: Pre-programmed Variable Frequency Drive

It is strongly recommended that the electrician contact LEVEL UP before starting work.

TOLERANCES UNLESS OTHERWISE SPECIFIED

1" (0.00) 25.4 MM OR LESS ±1/32 (0.03) .793 MM
OVER 1" (0.00) 25.4 MM LESS THAN 12" (0.200) 304.80 MM ±1/16" (0.625) 159 MM
OVER 12" (0.200) 304.80 MM LESS THAN 60" (6.000) 1524 MM ±1/8" (0.25) 318 MM
OVER 60" (6.000) 1524 MM TO 120" (12.000) 3048 MM ±1/4" (0.250) 635 MM

LEVEL UP ELEVATORS & LIFTS LLC **LEVEL UP**
 4151 WEST 108TH STREET
 HIALEAH, FL 33018
 (305) 884-1091 Fax (305) 884-1092
 ELEVATOR & LIFTS

CUSTOMER: -	SCALE : NTS
JOB NAME: -	DRAWN BY: LC
LOCATION: -	CHECKED BY: JC
-	RELEASED BY: -
-	CUSTOMER#: XX
-	P.ORDER #: XX